

## Ready for success in study, work and life

- Help students develop real-life English skills for work and study
- Prove they can use everyday written and spoken English at an upper-intermediate level
- Show they are ready to work or study in an English-speaking environment
- Help students gain a valuable qualification that is accepted worldwide

**15,000**  
organisations worldwide trust  
Cambridge English exams

### What's next?

Students can take the exam on paper or on computer.

#### STEP 1 - Contact your local exam centre

Your local centre can give you details of dates, costs, how to prepare and how to register for an exam. Find your nearest centre at [www.cambridgeenglish.org/centresearch](http://www.cambridgeenglish.org/centresearch)

#### STEP 2 - Get support

Find a wide range of support, including official Cambridge English preparation materials, at [www.cambridgeenglish.org/firstforschools](http://www.cambridgeenglish.org/firstforschools)

© UCLES 2014 | CE/1005/4Y05  
\*1671474334\*



### Contact us

Cambridge English  
Language Assessment  
1 Hills Road  
Cambridge  
CB1 2EU  
United Kingdom

[www.cambridgeenglish.org/helpdesk](http://www.cambridgeenglish.org/helpdesk)

 [www.cambridgeenglish.org/firstforschools](http://www.cambridgeenglish.org/firstforschools)

 [facebook.com/CambridgeEnglish](https://facebook.com/CambridgeEnglish)

 [twitter.com/CambridgeEng](https://twitter.com/CambridgeEng)

 [youtube.com/CambridgeEnglishTV](https://youtube.com/CambridgeEnglishTV)

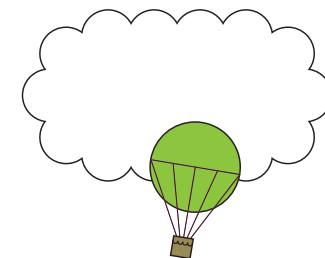
Cambridge English Language Assessment is part of the University of Cambridge. We develop and produce the most valuable range of qualifications for learners and teachers of English in the world. Over 4 million people take Cambridge English exams each year in 130 countries. More than 15,000 universities, employers, government ministries and other organisations accept our certificates.

Cambridge English Language Assessment - a not-for-profit organisation.



# Cambridge English First for Schools

Ready for success in study, work and life



Brief exam guide for exams from 2015

## Show students are making real progress in English

Cambridge English: First for Schools is specifically designed to motivate school-aged learners. It shows that when students leave school, they are ready to:

- **study** in English at foundation or pathway level
- **work** in an English-speaking environment
- **live** independently in an English-speaking country.

## Real everyday language skills

The exam shows students can:

- **express views, feelings and opinions** effectively in writing and give reasons
- **find relevant information** in texts
- **identify the expression of feelings and attitudes** and ask for factual information and understand the answer
- **keep up conversations** on familiar topics.

## An internationally accepted certificate

Students receive the same certificate as adults that take the *Cambridge English: First* exam.

This certificate is accepted by thousands of leading businesses and educational institutions worldwide, as well as the UK Home Office and the Irish Nationalisation and Immigration Service (INIS).

To view the full list of institutions who accept the exam visit [www.cambridgeenglish.org/recognition](http://www.cambridgeenglish.org/recognition)



## What level is the exam?

The exam focuses on Level B2 of the Common European Framework of Reference for Languages (CEFR) – an upper-intermediate level of English.

## What's in the exam?

The exam is designed to be fair to people of all nationalities and linguistic backgrounds and is supported by a dedicated research programme.

It covers all four language skills (Reading, Writing, Listening and Speaking) and knowledge of grammar and vocabulary.

**Reading and Use of English:**  
1 hour 15 minutes

Shows a student can understand texts from publications such as books, newspapers and magazines.

**Writing:**  
1 hour 20 minutes

Shows a student can write different text types, such as a short story, report or a letter.

**Listening:**  
40 minutes

Shows a student can follow a range of spoken materials, such as news and everyday conversations.

**Speaking:**  
14 minutes

Shows a student can communicate effectively in face-to-face situations. Students take the test with one or two other candidates.

The Reading and Use of English paper is worth 40% of the marks, and each of the other papers is worth 20%.

Download sample papers at [www.cambridgeenglish.org/firstforschools](http://www.cambridgeenglish.org/firstforschools)



[www.cambridgeenglish.org/firstforschools](http://www.cambridgeenglish.org/firstforschools)

## Where could this exam take students in the future?



“Preparing for the exam gave me the confidence and language skills I eventually needed to travel internationally, and get a job at a prestigious biopharmaceutical laboratory.”

Anais Legent  
Cambridge English: First certificate holder  
and Research Associate at Kymab Ltd.