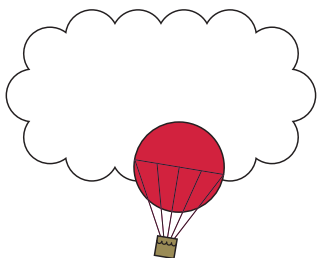


# Cambridge English Preliminary *for Schools*

Brief exam guide



*Practical English for everyday use*

Preliminary English Test (PET) for Schools



**CAMBRIDGE ENGLISH**  
Language Assessment  
Part of the University of Cambridge

## Motivate students to improve their English

Cambridge English: Preliminary for Schools is specifically designed to motivate school-aged learners. It shows a student can use English for everyday social and study purposes.

## Real everyday language skills

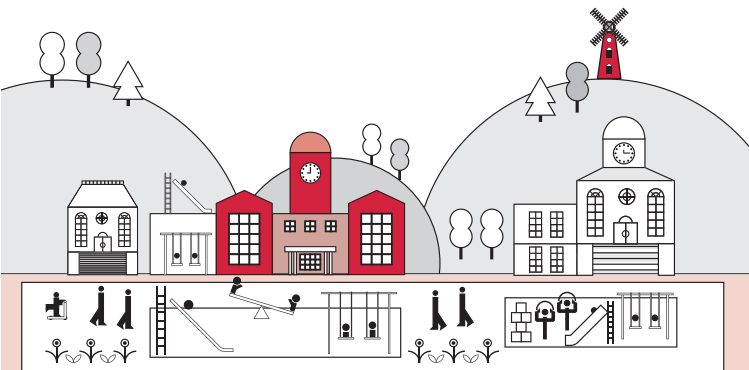
The exam shows students can:

- **understand straightforward instructions** or public announcements
- **express simple opinions** on abstract/cultural matters
- **understand routine information** and articles
- **write letters or make notes** on familiar or predictable matters.

## An internationally accepted certificate

Students receive the same certificate as adults that take the *Cambridge English: Preliminary* exam.

This certificate is accepted by thousands of leading businesses and educational institutions worldwide.



## What level is the exam?

The exam focuses on Level B1 of the Common European Framework of Reference for Languages (CEFR). It shows a student can use everyday English at an intermediate level.

## What's in the exam?

The exam is designed to be fair to people of all nationalities and linguistic backgrounds and is supported by a dedicated research programme.

It covers all four language skills (Reading, Writing, Listening and Speaking) and knowledge of grammar and vocabulary.

**Reading  
and Writing:**  
1 hour 30 minutes

Shows a student can understand written information, and use structure and vocabulary correctly.

**Listening:**  
30 minutes

Shows a student can understand a range of spoken materials, including everyday conversations.

**Speaking:**  
10-12 minutes

Shows how well a student can speak English in conversation. Students take the test face to face with one or two other candidates.

Reading and Writing is worth 50% of the total marks, and each of the other papers is worth 25%.

Download sample papers at  
[www.cambridgeenglish.org/preliminaryforschools](http://www.cambridgeenglish.org/preliminaryforschools)



[www.cambridgeenglish.org/  
preliminaryforschools](http://www.cambridgeenglish.org/preliminaryforschools)

## Where could this exam take students in the future?

“ I studied for Cambridge English: Preliminary. My goal was to progress to the higher level Cambridge English exams and my exam was a great way to experience Cambridge English. If you want to get a job, you need a good level of English. ”

Josue Garcia Alvarez  
Cambridge English: Preliminary certificate holder  
and trainee Industrial Engineer



## Practical English for everyday use

- Motivate school-aged learners to improve their English
- Help them grow in confidence and reward success
- Measure students' progress using international standards
- Help students access the best study, work and life opportunities

**13,000+**  
organisations worldwide trust  
Cambridge English exams

## What's next?

### Contact your local exam centre

Your local centre can give you details of dates, costs, how to prepare and how to register for an exam.

Find your nearest centre at

[www.cambridgeenglish.org/centres](http://www.cambridgeenglish.org/centres)

### Get support

Find a wide range of support, including official Cambridge English preparation materials, at

[www.cambridgeenglish.org/preliminaryforschools](http://www.cambridgeenglish.org/preliminaryforschools)

© UCLES 2013 | CE/1006/3Y02



\*0694795927\*



**CAMBRIDGE ENGLISH**  
Language Assessment  
Part of the University of Cambridge

## Contact us

Cambridge English  
Language Assessment  
1 Hills Road  
Cambridge  
CB1 2EU  
United Kingdom

[www.cambridgeenglish.org/help](http://www.cambridgeenglish.org/help)



[www.cambridgeenglish.org/preliminaryforschools](http://www.cambridgeenglish.org/preliminaryforschools)



[facebook.com/CambridgeEnglish](https://facebook.com/CambridgeEnglish)



[twitter.com/CambridgeEng](https://twitter.com/CambridgeEng)



[youtube.com/CambridgeEnglishTV](https://youtube.com/CambridgeEnglishTV)

Cambridge English Language Assessment is part of the University of Cambridge. We develop and produce the most valuable range of qualifications for learners and teachers of English in the world. Over 4 million people take Cambridge English exams each year in 130 countries. More than 13,000 universities, employers, government ministries and other organisations accept our certificates.

Cambridge English Language Assessment – a not-for-profit organisation.

